



GLASGOW AREA CHAMBER OF COMMERCE & AGRICULTURE, INC.

"Community First"

EXEC BITS by Tami Burke ,Executive Director

During the past couple of months it really hit me – just how much our businesses support this community and its endeavors.

Our businesses are the first members approached for support of fundraisers, for free or deeply discounted items for auctions, or to donate space for an event, along with donations of their time, (maybe the most precious commodity we all possess).

Our businesses here in Glasgow have been hit with a slow economy just as other places in this country have and some have struggled to just keep their doors open. But they do...stay open. Because they are committed. Committed not just to their business but to our COMMUNITY. They have, for some reason, appointed themselves as stewards of our little town. They willingly, even if on a lesser scale, continue to donate for auctions, donate event spaces and their time because that keeps them connected to YOU.

So, please, the next time you visit some of our local businesses please take a moment and say THANK YOU for their continued support of this community! I can almost guarantee they will thank you for yours!

THANK YOU!! from the Glasgow Area Chamber of Commerce & Agriculture, Inc.

June - July 2011

Special points of interest:

- Featherfest - Montana Audubon's Annual Bird Festival, Cottonwood Inn - June 3-5 2011
- 17th Annual Longest Dam Race June 18, 2011, Ft Peck
- Rock the Block June 24, 2011 on Klein Ave
- 24th Annual Governor's Cup Walleye Tournament July 7-9 2011 Ft Peck Lake.
- Crazee Days Aug 5-6 2011 Downtown Glasgow
- Thank you to Peggy and all her helpers at Nemont Manor for stuffing the bags for all of our events.

UPCOMING EVENTS	pg
Summer Events	2
Ft. Peck Theatre	3
Featured Members	4
Montana Audubon	6
Longest Dam Race	7
1st Friday Punch Card	9
Rock The Block	10
Governor's Cup	11

Check us out on the web @
www.glasgowmt.net



Summer of Events

JUNE 2011

- 2nd Chamber Board Meeting
- 4th Ranch Rodeo & Spring Fling BBQ & Dance
- 3-5 **MT State Audubon Bird Festival**
- 9-12 State Firefighters Convention
- 16th Chamber Board Meeting
- 16th Luck of the draw Card Game @ Fashionette
- 18th **Longest Dam Race**
- 18-19 Mud Bog
- 19th Father's Day
- 23-24 MT State Chamber Meetings
- 24th FCB 120th Anniversary BBQ 11-1p.
- 24th **Rock the Block- Klein Avenue**
- 25th Jackpot Team Roping & Breakaway Roping

JULY 2011

- 1-3 100th Anniversary Opheim All Class Reunion
- 4th Independence Day- Chamber Closed
- 6th **Governor's Cup Social**
- 7-9 **MT Governor's Cup Walleye Tournament**
- 9th **Junior Governor's Cup @ Kiwanis**
- 7-10 Nashua All Class Reunion
- 16th VFW Community Picnic
- 12th Annual Milk River Catfish Classic
- 17th Glasgow Chamber/Glasgow Distributors Sponsor Night @ Summer Theatre
- 21st Chamber Board Meeting

AUGUST 2011

- 4th Chamber Board Meeting
- 5-6 **Crazeez Daze & Rock the Block**
- 5-7 GHS Class of '71 40th Yr. Reunion
- 6th March of Dimes Walk
- 6-9 NEMT Fair, Rodeo & Derby
- 12-13 Relay for Life
- 18th Chamber Board Meeting

SEPTEMBER 2011

- 1st Board Meeting
- 5th Labor Day
- 15th Board Meeting
- 16th Homecoming vs. Fairfield Eagles!
- 17th **Cultural Festival- (Formerly Known as Oktoberfest)**

Valley County Pioneer Museum

Open M - S 8:30 - 5:30 pm

For more information or to schedule tours

406-228-8692

OPEN HOUSE JUNE 12, 2011

1pm - 5 pm refreshments available.

Everyone is invited to visit the museum and view the new displays and improvements. A log room cape, complete with fireplace, houses the original Thomas Molesworth furniture originally located in the old Carnegie Library fireplace room .

12th Annual Milk River Catfish Classic



Glasgow, MT

July 16, 2011 5:00 pm

\$50.00 Per Two Person Team

Entry Limited to the First 80 Teams!

Get Your Registration Form at The Chamber Office

Any Questions or For More Information Contact:

(701)-290-7277 or Visit us Online at:

www.montanacats.com

Featured Members

Though it's a new business, Brian has wowed us with his abilities for the last 11 years doing Calcutta's and Benefit auctions in and around the Glasgow area. Brian trained under the direction of Dennis Olson while he was enjoying a career in the demolition derby scene.

After retiring last year on a huge win, he decided to continue with his passion of being a fulltime auctioneer, and Austin's Auctions was born. Brian and his wife Angela, who handles all the bookkeeping and clerking part of the operation, with Todd Riggs and Randy Isakson doing the ring work, had their first official sale under the new business for Valley County who they will be again helping by doing a consignment sale this fall since Mother Nature didn't cooperate this Spring. June 25, 2011 they will host the Montana Bar Antique and Memorabilia Sale.

Come out and Join them, they will be glad to see you there. You can reach them anytime by calling 406-228-9324

www.austinauctionsmt.com

Larry DuBeau has owned the Park Grove Bar & Café for 29 years in the same location, along with his daughter Kim, who has worked with him for many years. They are known for their world famous 1/2 pound hamburgers which were featured in several magazines, such as Triple A magazine, as well as a commercial on The Back Roads of Montana "where they were labeled as a top spot to eat". Their menu includes homemade soups, salad dressings, potato and macaroni salads. They offer full dining with soup and sandwich specials daily.

The bar offers services such as an ATM, Poker & Keno machines, a Shuffle Board Table, Dart Boards and Pool Tables.

Café Hours -

10am to 2pm Mon

10am to 9:30pm Tues – Sun

Bar Hours-

10am - 2pm Mon

10am - 2am Tues - Sun

Park Grove Bar & Café

The Glasgow Area Chamber of Commerce & Agriculture, Inc. and the Bonnie City Blues & Brews Festival Committee would like to thank all who sponsored or volunteered for the 2011 Bonnie City Blues and Brews Festival.

It was a stellar night of live music and brews as promised at the Bonnie City Blues & Brews Festival presenting Obadiah Parker, Adam Ezra Group and The Clumsy Lovers.

We are very pleased with the number of participants, and the quality of the event. The Festival has brought new people into our town, many who spend the night and shop at our merchants. The Bonnie City Blues and Brews Festival is the kickoff to our summer here in the Glasgow area. Our goal is to increase attendance from Montana and surrounding states, and to continue to bring in high quality entertainment to our community. We appreciate your participation and input into this event.

Sponsors : Ft Peck Properties, Creative Elements, Gulf Stream Airlines, Wagoner Roofing, El Cor Del, Glasgow Courier, J&M Distributing, Valley Sound & Music, Sysco, All Seasons, Mirror Image, Ezzies Wholesale, Wells Fargo, Blue Rock Beverage, Nemont Beverage, Farhlys, D.R. Durell Construction, Food Services of America, Cottonwood Inn, Jeff Cole Ins., Hi-Line Refrigeration, Thompson & Sons, Glasgow Distributors, Pete Helland Law Firm



June 2011

Sun	Mon	Tue	Wed	Thu	Fri	Sat
			1	2 Board Mtg	3 Mt State Audobon Bird Festival Featherfest 12th annual Milk River Catfish Classic Calcutta & Social	4 Mt State Audobon Bird Festival Featherfest
5 Mt State Audobon Bird Festival Featherfest	6	7	8	9	10 State Firefighters Convention	11 State Firefighters Convention
12	13	14	15	16 Board Mtg Fashionette's Luck of the draw card game	17	18 Longest Dam Race Mud Bog
19 Fathers Day	20	21	22	23 MT State Chamber Mtg	24 MT State Chamber Mtg FCB 100th Ann BBQ 11-1	25 Glasgow Swim Meet Jackpot team Roping & Breakaway Roping
26	27	28	29	30		

July 2011

Sun	Mon	Tue	Wed	Thu	Fri	Sat
					1 100 ann. Ophiem All Class Reunion	2 100 ann. Ophiem All Class Reunion
3 100 ann. Ophiem All Class Reunion	4 CHAMBER CLOSED	5	6 Governors Cup Social	7 Mt Governors Cup Walleye Tournament Nashua All Class Reunion	8 Mt Governors Cup Walleye Tournament Nashua All Class Reunion	9 Mt Governors Cup Walleye Tournament Junior Governors Cup @ Kiwanis Park Nashua All Class Reunion
10	11	12	13	14	15	16 VFW Community Picnic 12th annual Milk River Catfish Classic Tournament 5pm-Midnight
17 Sponsor Night Chamber/Glasgow Distributors @ Summer Theatre	18	19	20	21 Board Meeting	22	23
24	25	26	27	28	29	30
31						

Wings Across the Big Sky



Montana Audubon's Annual Bird Festival
June 5-5, Cottonwood Inn, Glasgow, MT

Co-hosted by Glasgow Chamber of Commerce and Glasgow Children's Museum

Thanks to our sponsors: Bureau of Land Management; Montana Fish, Wildlife & Parks; Missouri River Country; American Prairie Foundation; and Birds & Beasleys

Artwork by Andrew Guttenberg

Dessert Auction:

As the old saying goes; EAT DESSERT FIRST, well at the Montana Audubon Annual Bird Festival you have the chance to do just that. With the community coming together to donate their delicious spoils you have the chance to get your hands on some very delectable treats indeed!

Some examples that are going to be available are:

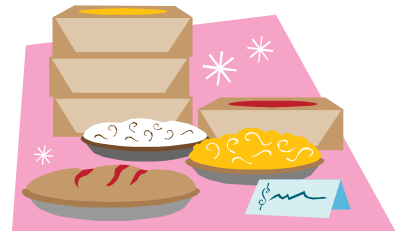
(2) Pecan Torte with White Chocolate Glaze by Allison Nichols

Chocolate Almond Torte by Becky Erickson

Lemon Meringue Pie by Ivy Stebleton

Butterfinger Pie & Ginger Rhubarb Crisp by Lynn Wagner

Triple Chocolate Cake by Kari Lee Knirim



The Dessert Auction benefits the Sullivan Park Trails.



Keynote Speaker: Gary Ferguson has written for a variety of national publications, and is the author of sixteen books on nature and science. His title *The Great Divide* was as Audubon Magazine Editor's Choice selection, and *Hawks Rest: A Season in the Remote Heart of Yellowstone* won two prestigious book seller awards.



17th Annual LONGEST DAM RACE

Saturday, June 18, 2011

Fort Peck Dam, Fort Peck, Montana

Events Include: 10k & 5k run, 5k walk, 1 mile run/walk, 10 mile Novice Bike Route

The Course: The race begins with the 10k run and will cross 1.8 miles of the Fort Peck Dam. The 10k course rises in elevation from the low point at the starting line some 350 feet over a distance of approximately 2 miles. The surface is mixed equally between gravel, asphalt and dirt road. The 5k run/walk will begin on top of the Fort Peck Dam, and go down a gravel road for approximately 1k and finish at Kiwanis Park. The 1-mile run/walk will be on a nature trail at Kiwanis Park, which is a flat course that is paved. The bike route will start at Kiwanis Park. The novice bike route will be an out and back course over flat terrain for approximately 10 miles. All races will finish at Kiwanis Park. **Please note that the Montana Track and Field Association will not sanction this year's 10k and 5k.**

Rules:

- All participants are required to check-in prior to the race at the Kiwanis Park staging area. -Race officials will be present at 7:00 AM for check-ins.
- Runners must face traffic
- Helmets are mandatory for all cyclists
- All races will be held on schedule regardless of weather conditions
- Alcohol is not permitted

Early Bird Registration: Entry Form postmarked by May 31, 2011, entry fee will be \$18 for each participant and \$5 for each additional event.

AFTER MAY 31, 2011

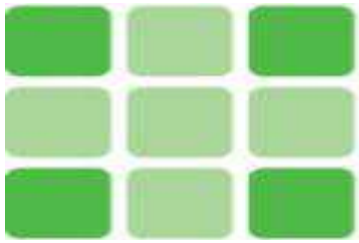
Entry Fee: \$20 for each participant-One Event
 \$10 for each participant 14 years old or younger
 \$ 5 for each additional event

Entry Fee Includes: Longest Dam Race T-Shirt
 Additional t-shirts will be available of a charge of \$15 each



SPONSORED BY:

- Francis Mahon Deaconess Hospital - Culligan - Fort Peck Summer Theatre- Nemont -
- MT Army National Guard - CHMS, P.C., - The Dental Care Clinic Dr. Charles Wilson &
- Dr. Jim Kolstad - Wells Fargo- First Community Bank- KLTZ/KLAN-
- D&G Sports & Western – Nemont Beverage Co. -
- Blue Rock Beverage- Glasgow Area Chamber of Commerce & Ag



MONTANA CHAMBER CHOICES

Got Insurance?

Have you considered offering health insurance to employees? If so, you are like 88% of other small business owners who considered offering health insurance to employees in the past 3 years.

Health insurance improves employee productivity and quality employee retention. Additionally, small businesses with 25 full-time employees or less may now be eligible for a federal tax credit for offering health insurance.

So what are you waiting for? As a benefit of membership in the Chamber, you have access to the Montana Chamber Choices Health Insurance Program.

Montana Chamber Choices is a business friendly insurance solution for sole proprietors and companies with 2-99 employees.

What does Montana Chamber Choices offer?

▣ 11 different plan options for a variety of price and coverage choices including 4 health savings account (HSA) eligible plans

How can Montana Chamber Choices help you?

▣ This program offers many comprehensive benefits that provide security for families by offering many added member benefits like:

o \$5,000 Life Insurance

o \$5,000 Accidental Death & Dismemberment

o Optional Voluntary life insurance

o Identity Theft Protection Resources

▣ \$5,000 automatic base life insurance for all employees

▣ Super affordable voluntary life insurance option for employees

▣ Employee Assistance Program (EAP)

▣ Online Advanced Directive and Will Preparation Services



The Members of The Glasgow Area Chamber of Commerce are now being offered AFLAC supplemental insurance! By being a member of the Chamber you are able to purchase this valuable protection on a group premium basis, and you can pick and choose which policies work best for you, including accident, cancer, dental and more! Please contact our AFLAC agent,

Nikki Saiz for more information.

Nikki Saiz —District Sales Coordinator * Email: nicole_saiz@us.aflac.com * Cell: 406-263-2019

Fax: 406-228-8442 * 804 6th Ave. N * Glasgow, MT 59230

An Independent Associate Representing AFLAC

The Glasgow Chamber of Commerce and the following participating merchants invite you downtown for:

1st Friday in Downtown Glasgow: June 3rd, 2011 4-7pm

Bring this "punch pass" to each of the following locations to receive a sticker of attendance. The full sheet may be entered in a raffle at the last stop; the Goodkind Gallery (where you will have the chance to win an original piece of art). The sheet must be completely filled out & dropped off by 7pm during on 6/3/11.

D & G Creative Elements Surplus Shop Fashionette Flicks Killions Holly & Co. Goodkind Gallery

Please Welcome our Newest Chamber Members!

Lakeridge Motel and Tackle Shop
Kitchenettes and Convenience Store

HCR 1660

6004 Mt Hwy 24 S

Glasgow, MT 59230

406-526-3597

Open 6am - 9:30 pm Daily

You place for tackle, fuel, ice, Fishing/Hunting Licenses,
food, propane



PO Box 1009 Glasgow, MT 406-263-2479

Jeanelle specializes in maternity photography; baby photography that is creative and fun ; Senior Portraits that are just as unique as the individual; family photography that celebrates the unique individual personalities of each member of your family; wedding photography that captures every detail of your special day. Jeanelle is creative with an unique artistic vision to ensure optimal satisfaction and quality to each customer.

Email: jdascher.zenfolio.com

Watkins by Lon Stratton

58 Sunny Hills Drive

Glasgow, MT 59230

406-263-7262

Spices, Extract, (Their Vanilla is the most popular flavor in the world) Herbs and Spices, Cooking Supply's, Natural based Remedies (some of the best Pain Relieving Liniments there is) Natural Personal Care (awesome Foot care, Body oils, ect.) Natural plant-based home care (All purpose Cleaners, safe for home and family) Glass cleaner, coconut based and great for tinted windows, ect. (HE) natural Laundry detergent. Natural based Supplements. Eye care - Skin, Hair & Nails - ect.

www.watkinsonline.com/lonstratton



Open Mon- Fri 10am to 6pm

Saturday 11am to 6pm

Sunday 12pm to 4pm

Trees, shrubs , perennials, deer resistant plants, unique pottery, fertilizers, organic potting soils, Sanuk Footwear, Smith Sunglasses, and Marmot Clothing

JUNE 24, 2011

Come out and enjoy entertainment on Klein Avenue with vendors in the street. A celebration honoring 21 businesses & Organizations that have been around for 100 years, and a Thank you to all city and county road crews for an AWESOME job this winter!

Featuring:

Erik Fingers

Ray Gustafson

ROCK THE BLOCK

<http://www.myspace.com/erikfingersray>



24th Annual Montana Governor's Cup Walleye Tournament

July 7, 8, & 9 2011

THURSDAY JULY 7:

- 8:00 AM - NOON - GUYS & GALS TOURNAMENT- \$25 ENTRY FEE
- 3:00 PM - GOVERNOR'S CUP REGISTRATION STARTS, KIWANIS PARK
- 5:00 PM - GOVERNOR'S CUP MANDATORY RULES MEETING— KIWANIS PARK
- 5:30 PM— GOVERNOR'S CUP PATROL BOAT MANDATORY RULES MEETING
- 5:30 - 6:30 PM - ANGLERS AND SPONSORS ONLY PICNIC— KIWANIS PARK
- 6:00- CALCUTTA- AUCTIONEER LUCAS STROMMEN- KIWANIS PARK

FRIDAY JULY 8:

- 6:45 AM - OPENING CEREMONY
- 7:00 AM - 24TH ANNUAL MT GOV. CUP TOURNAMENT BEGINS
- 3:00 PM - SCORES POSTED AT KIWANIS PARK- EMCEE "THE CAPTAIN"
- 5:00 PM- FISH FRY AT KIWANIS PARK, OPEN TO THE PUBLIC.
 - GOOD FOOD/COLD BEVERAGES/RAFFLES/SPONSOR PRODUCTS
 - RAFFLES INCLUDE : \$500 GAS RAFFLE
 - VISIT WITH PARTICIPATING FISHERMAN & SPONSORS
- 6:00 PM - CALCUTTA— LUCAS STROMMEN AUCTIONEER

SATURDAY JULY 9:

- 6:45— OPENING CEREMONY
- 7:00— FINAL DAY FOR FISHING THE 24TH ANNUAL GOV. CUP
- 7:45— 12:30 JUNIOR GOVERNOR'S CUP— KIWANIS PARK
- 3:00— WEIGH-INS - KIWANIS PARK PUBLIC WELCOME
- 4:00 FINAL SCORES POSTED, KIWANIS PARK BY EMCEE - "THE CAPTAIN". FROM MT OUTDOOR RADIO SHOW
 - WINNERS ANNOUNCED & PRIZES AWARDED

\$300 Entry Fee Per 2 Person Team
\$100 Day Money Option
Big Fish Pot Options

Get your Registration Form
at The Glasgow Chamber Office
or visit www.mtgovcup.com



FRIDAY FISH FRY
OPEN TO THE PUBLIC
STARTS AT 5:00



2011 MT GOVERNOR'S CUP SPONSORS

Coca-Cola * Crestliner

*Nemont Beverage * Hi-Line Ford *

Nemont * NorthWestern Energy *

Mercury/ Mon-Dak Marine

BNSF
Ezzies Wholesale

For More Information Contact the Glasgow Area Chamber of Commerce & Ag. Ph: 228-2222

Box 832 Glasgow, MT 59230 www.glasgowmt.net Email: chamber@glasgowmt.net

Glasgow Chamber of Commerce & Ag.
P.O. Box 832
23 Hwy. 2 East

Phone: 406-228-2222

Fax: 406-228-2244

E-mail: chamber@glasgowmt.net

PRSR STD
U.S. POSTAGE
PAID
Glasgow, MT

Vision Statement: The Chamber seeks to build a progressive community, which is technologically advancing, focused on agriculture, tourism, commerce and involved with our communities development.

Purpose: To enable our diverse membership to succeed by collectively fostering and advocating for a vibrant regional economic environment.

2011 Glasgow Area Chamber of Commerce & Ag Board of Directors

~EXECUTIVE BOARD~

President : Mike Pehlke	Pehlke's Furniture
Vice President: Paul Koski	Nemont Beverage
2nd Vice President: Gregg Hunter	Nemont
Secretary/Treasurer: Ryan Fast	Fast Farms
Past President: Drew Markle	Markle's Inc.

~DIRECTORS~

Stan Ozark	KLTZ/KLAN
Denise Synan	Creative Elements
Sue Smith	FT. Peck Properties
Todd Young	Gordon's Foods
Julie Hallock	Glasgow Job Service
Cathryn Sugg	Goodkind Art Gallery
Dustin Beitz	
Clay Redding	Valley Bank
Zack Burner	Cottonwood Inn

~STAFF~

Tami Burke	Executive Director
Angee Sorensen	Office Manager
Lisa Olk	Bookkeeper

2011 Junior Governor's Cup

July 9, 2011

Location: Kiwanis Park

Fort Peck, Montana

7:45am - 12:30pm

Age 14 and under

**For more information contact
The Glasgow Chamber of Commerce
Office**

Call 406-228-2222